

Welcome back to Priory Primary School 2024 - 2025



You are in **Hazel Class.**

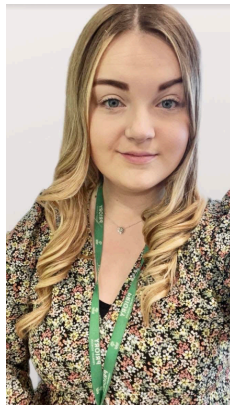


Meet the team

**Your teacher is
Miss Kennington.**



**Another member of our team who may
work in your classroom is Miss Johnson.**



Arriving at school

When you arrive at school, you will enter via the Year 5/6 entrance.



Your teacher or teaching assistant will meet you at the entrance when the doors open. Arrive at school between 8:30 and 8:40am. It is really important that you are on time for school every day so that you are ready for your learning.

Your classroom



Cloakroom

You will hang up your coats and bags in the cloakroom.



Toilets

You will use the Year 5/6 toilets.



Playtime

When you go for playtime, you will use the KS2 playground or the field.



You will also be able to play with toys that are in the Year 5/6 tub.



End of the day

At the end of the day, you will leave via the Year 5/6 door.



Your teacher or teaching assistant will walk you down to the exit at the end of the school day.

The school day for Hazel class ends at 3:00pm.